

PRODUCT SHEET

TwistII Clean - Inline Sediment Filters for Water Systems

DESCRIPTION

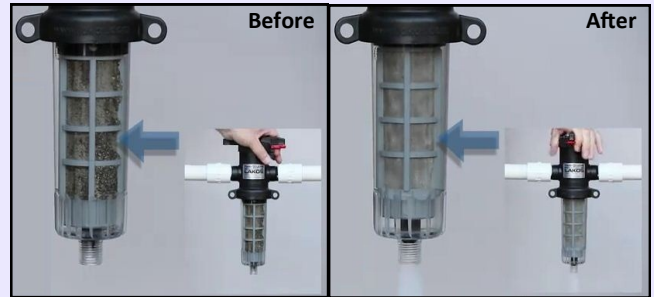
TwistII Clean inline sediment filters remove organics, sand and sediment from water systems. Easy to install and easy to use, **TwistII Clean** can be used on a as-and-when basis and provides quick and easy cleaning in less than 20 seconds.

A gentle ¼ TWIST of the handle begins the patented reverse flushing action, and the **TwistII Clean** backwashes itself from the inside out. All the debris is quickly and forcefully cleaned off the filter element and flushed from the bottom port.



TECHNICAL CHARACTERISTICS

- Flow Range: 1 to 78 US gpm* (0.2 to 17.7 m³/hr)
- Maximum Pressure: 100 psi (6.9 bar)
- Maximum Temperature: 120°F (49°C)
- Mesh Sizes:
 - 30 Mesh (600 Micron) Element (Brown)
 - 60 Mesh (250 Micron) Element (White)
 - 100 Mesh (150 Micron) Element (Gray)
 - 140 Mesh (105 Micron) Element (Black)
 - 200 Mesh (74 Micron) Element (Blue)



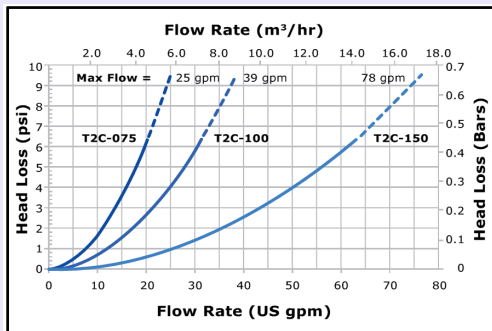
MAIN CHARACTERISTICS

- No mess
- No disassembly to clean
- No need to turn off water to clean (eliminated air in system)
- No leaks
- Easy maintenance and no tools required
- Rugged design works with all plumbing systems indoors and outdoors
- Over 200% larger stainless steel screen area lasts for years, collects maximum debris between cleanings. Clear bowl shows when filter needs cleaning.



Typical applications: Home water well, agricultural and landscape irrigation, misting systems, pools, spas and more!

SPECIFICATIONS



— = recommended flow range

--- = Not recommended at this flow

Model	Inlet/Outlet	Purge	Total Length	Length (from piping to purge port)	Width (inlet/Outlet)
T2C-075	¾" MPT	½" MPT	11¼" (298.45mm)	8¾" (222.25mm)	6" (152.4mm)
T2C-100	1" MPT	½" MPT	11¼" (298.45mm)	8¾" (222.25mm)	6" (152.4mm)
T2C-150	1½" MPT	¾" MPT	15¼" (387.35mm)	11¾" (298.45mm)	7½" (190.5mm)



www.youtube.com/geoquipwater



www.geoquipwatersolutions.com

geoquip water solutions limited

Unit 7, Sovereign Centre

Farthing Road Industrial Estate

Ipswich, IP1 5AP, ENGLAND

TEL: + 44 (0) 1473 462046

FAX: + 44 (0) 1473 462146

email: info@geoquipservices.co.uk